



Northumberland LEADER 2014-2020 Programme

What is LEADER?

LEADER is a bottom-up, community-led approach to delivering rural and community development through the Rural Development Programme for England (RDPE), which is managed by the Department for Food, Environment and Rural Affairs (Defra).

RDPE Programme 2014-2020	
Total £456 million	
• Countryside Productivity Scheme	£141 million
• Growth Programme	£177 million
• LEADER Programme	£138 million

In practice, it is a method of delivering rural development in rural communities where local people have the opportunity to take funding decisions at a local level in line with their Local Development Strategy (LDS), a plan that identifies priority funding for their local area within the **six National LEADER priorities**.

- support micro and small businesses and farm diversification
- boost rural tourism
- increase farm productivity
- increase forestry productivity
- provide rural services
- provide cultural and heritage activities

The LEADER programme will provide grants to small businesses, farmers, foresters and communities for projects that create jobs and grow the rural economy. 70% of the available funding to LAGs will be used for measures designed to directly support creation of jobs and growth and the remaining 30% to indirectly support jobs and growth.

- Three Key Groups within LEADER**
1. **Defra/RPA – setting national priorities**
 2. **Local Action Groups – reflecting local priorities**
 3. **Accountable body – ensuring financial propriety & compliance**

Building on the previous LEADER programme which ran from 2007 until 2013, during 2014 LEADER Local Action Groups in England were invited to prepare and submit new Local Development Strategies to cover the period 2014-2020. These were evaluated by Defra as part of a competitive process.

Defra announced in February 2015 the award of funds to 80 LEADER groups within England covering approximately 85% of the rural population in England.

LEADER areas within the North East Local Enterprise Partnership area:

- Durham Coast & Lowlands
- North Pennine Dales
- Northumberland Coast & Lowlands
- Northumberland Uplands

LEADER in Northumberland

Expected to run from Summer 2015 until March 2019

Northumberland Coast & Lowlands €2.481million (£1.9m)*

Northumberland Uplands €2.351million (£1.8m)*

Northumberland County Council acts as Accountable Body

North Pennine Dales €2.667million (£2.133m)*

Durham County Council acts as Accountable Body

* The funding will be subject to annual revaluations by Defra in the £/Euro exchange rate. For 2015 the rate is set at £1 = 0.80 Euro.

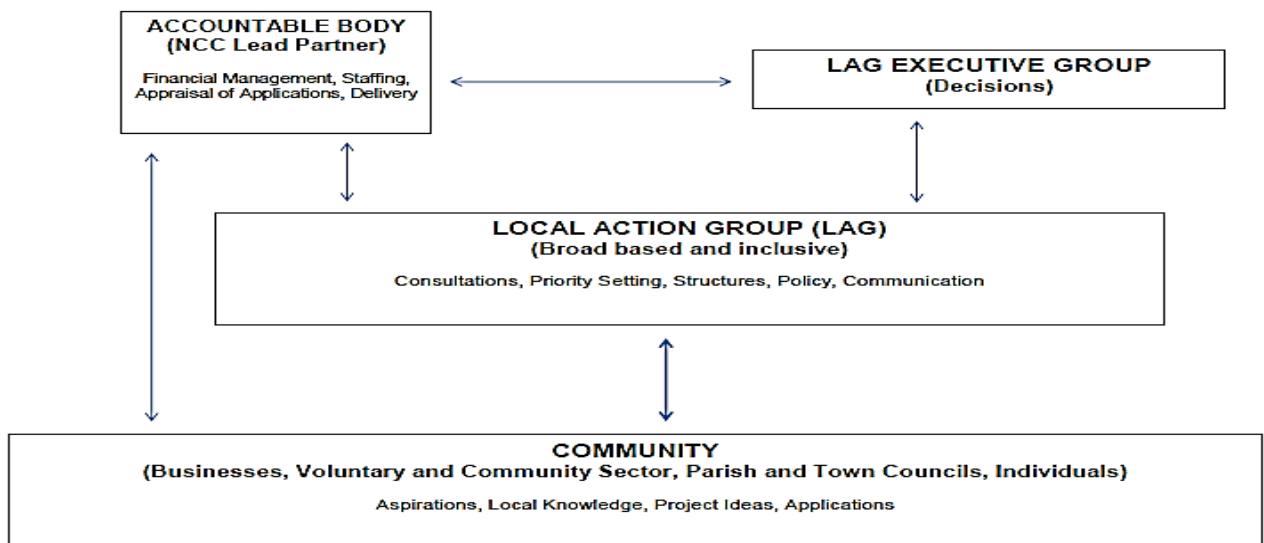
As an EU wide programme for rural areas a key element of LEADER is Trans-National and Inter-Territorial Cooperation between other LEADER areas and across EU Member States.

LAGs are able to develop Cooperation projects in line with the **six National LEADER Priorities** and their Local Development Strategies.

Local Action Groups

Who are they?

- Defra state that a LAG must include partners from different sections of the local community: public sector, private sector and civil society, as well as important sectors such as farming and forestry.
- LAGs must have a mix of public / private and socio-economic interests, and with no single interest group having more than 49% of voting rights.
- The LAG, as a decision making body, should aim at being gender balanced and have a fair representation of the specific target groups addressed by the LDS, such as young people, ethnic minorities, disadvantaged people, vulnerable groups.
- LAG members must also have the appropriate competencies and skills to generate and support development activity



The role of the Accountable Body

Northumberland County Council as the Accountable Body for LEADER in Northumberland

- Enters into a funding contract with Defra
- Undertakes Technical Appraisals of project applications
- Issues Grant Offer Letters
- Undertakes claims monitoring
- Reports to Defra & the LAG on programme performance

NCC is responsible for financial propriety and compliance of the LEADER programme in Northumberland.

Application Process

The LEADER Programme Officer will discuss with applicants their project and support the applicant in developing an Outline Application (OA). The OA will be assessed by the LAG to confirm eligibility and fit with their LDS. If successful at OA stage the applicant will be asked to submit a Full Application. Full Applications undergo a Technical Appraisal (TA) by the Accountable Body (NCC). Once a project has passed appraisal by the Accountable Body, the application is passed to each LAG for decision based on the projects eligibility within the LEADER Programme and the projects fit with each LAGs Local Development Strategy.

Further information on the 2014-2020 LEADER Programme in Northumberland is available from

Northumberland Coast and Lowlands LEADER

Ivan Hewitt 01670 623927 ivan.hewitt@northumberland.gov.uk

Website www.northumberland.gov.uk/lowlands

Northumberland Uplands LEADER

Gillian Cowell, 01670 623885 gillian.cowell@northumberland.gov.uk

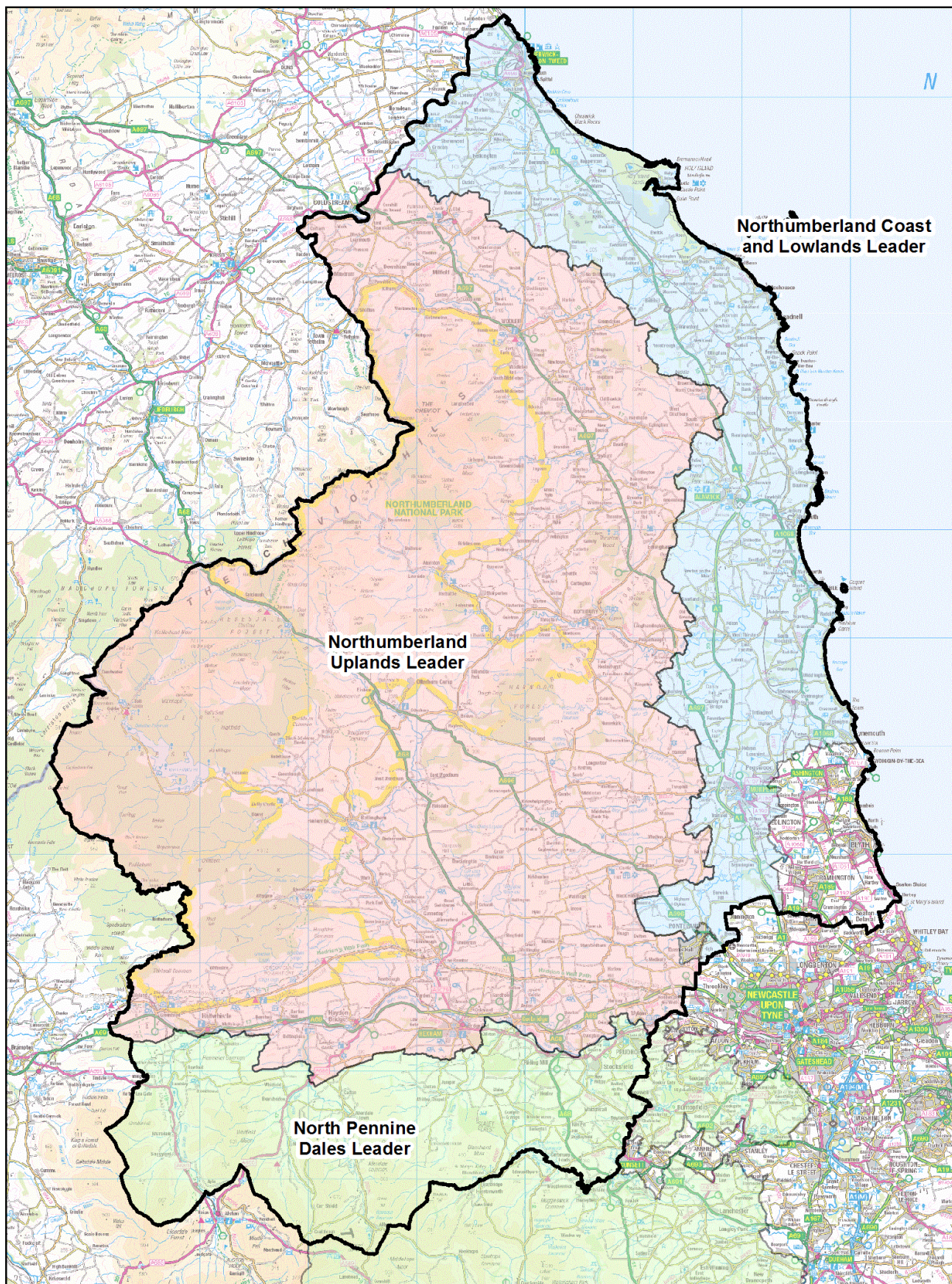
Website www.northumberland.gov.uk/uplands

North Pennine Dales LEADER

PJ Harding, 03000 266895 pamela.harding@durham.gov.uk

Website www.northpennindalesleader.co.uk

Leader Areas Northumberland



Published July 2015. Scale: 1:440,000

Produced by the Strategy & Change Team, Information Service, Northumberland County Council.

© Crown Copyright. All rights reserved. NORTHUMBERLAND COUNTY COUNCIL - OS Licence No. 100049048.